

FROM	TO	BEARING	DISTANCE
PM 75754	SSM 207263	175°02'45"	200.746
SSM 207263	SSM 197925	201°40'52"	210.792
SSM 197925	SSM 197926	108°48'15"	93.403
SSM 197926	PM 199972	125°15'48"	348.251
PM 199972	SSM 212255	291°24'09"	435.86
SSM 212255	PM 75752	317°26'10"	103.257
SSM 212255	SSM 197925	24°36'48"	79.319

MARK	MGA EASTING	MGA NORTHING	CLASS	PU	METHOD	STATE
PM 75752	415739.750	6208092.911	C	N/A	SCIMS	FOUND
PM 75754	415903.102	6208484.719	B	0.02	SCIMS	FOUND
SSM 126126	415816.835	6208348.167	B	0.02	SCIMS	FOUND
SSM 212255	415809.564	6208016.880	C	N/A	CASTRAL TRAVERSE	FOUND
SSM 207263	415920.442	6208284.780	C	N/A	CASTRAL TRAVERSE	FOUND
PM 199972	416215.229	6207857.875	C	N/A	CASTRAL TRAVERSE	FOUND
SSM 197925	415842.590	6208088.968	C	N/A	CASTRAL TRAVERSE	PLACED
SSM 197926	415930.978	6208058.869	C	N/A	CASTRAL TRAVERSE	PLACED

MARK	AHD VALUE	CLASS	PU	HEIGHT DATUM VALIDATION	STATE
PM 75754	132.483	B	0.03	SCIMS ADOPTED	FOUND
SSM 126126	132.761	B	0.03	FROM SCIMS-DATUM VALIDATION	FOUND
PM 75752	132.333	LD	N/A		FOUND
SSM 197925	131.186	LD	N/A		PLACED
SSM 197926	130.550	LD	N/A		PLACED

LINE	BEARING	DISTANCE
1	205°19'30"	19.460
2	250°51'10"	7.005
3	116°22'50"	20.050

NO.	CHORD	ARC	RADIUS
5	27°55'~18.087	18.087	755.8
6	26°30'~19.489	19.449	755.8
7	24°58'~20.845	20.845	755.8

FROM	TO	HEIGHT DIFFERENCE	METHOD
PM 75754	SSM 126126	+0.278	DIFFERENTIAL LEVELLING
SSM 126126	PM 75752	-0.428	DIFFERENTIAL LEVELLING
PM 75752	SSM 197925	-1.147	DIFFERENTIAL LEVELLING
SSM 197925	SSM 197926	-0.636	DIFFERENTIAL LEVELLING
SSM 197926	PM 75754	+1.933	DIFFERENTIAL LEVELLING

X-Y
 SSM 126126 TO PM 75752
 196° 48' 14" ~ 266.732 MGA GROUND
 196° 48' 14" ~ 266.737 BY ME

SSM 126126 TO PM 75754
 32° 16' 58" ~ 161.573 MGA GROUND
 32° 17' 13" ~ 161.571 BY ME

(A) EASEMENT TO DRAIN SEWAGE 5 WIDE (DP 1001586)
 (B) EASEMENT FOR ELECTRICITY PURPOSES 5 WIDE (DP 1083637)
 (C) EASEMENT TO DRAIN WATER 2 AND 20 WIDE

Surveyor : JOHN DAMIEN HARRISON
 Date of Survey : 10/02/2021
 Surveyor's Ref : PN 13138

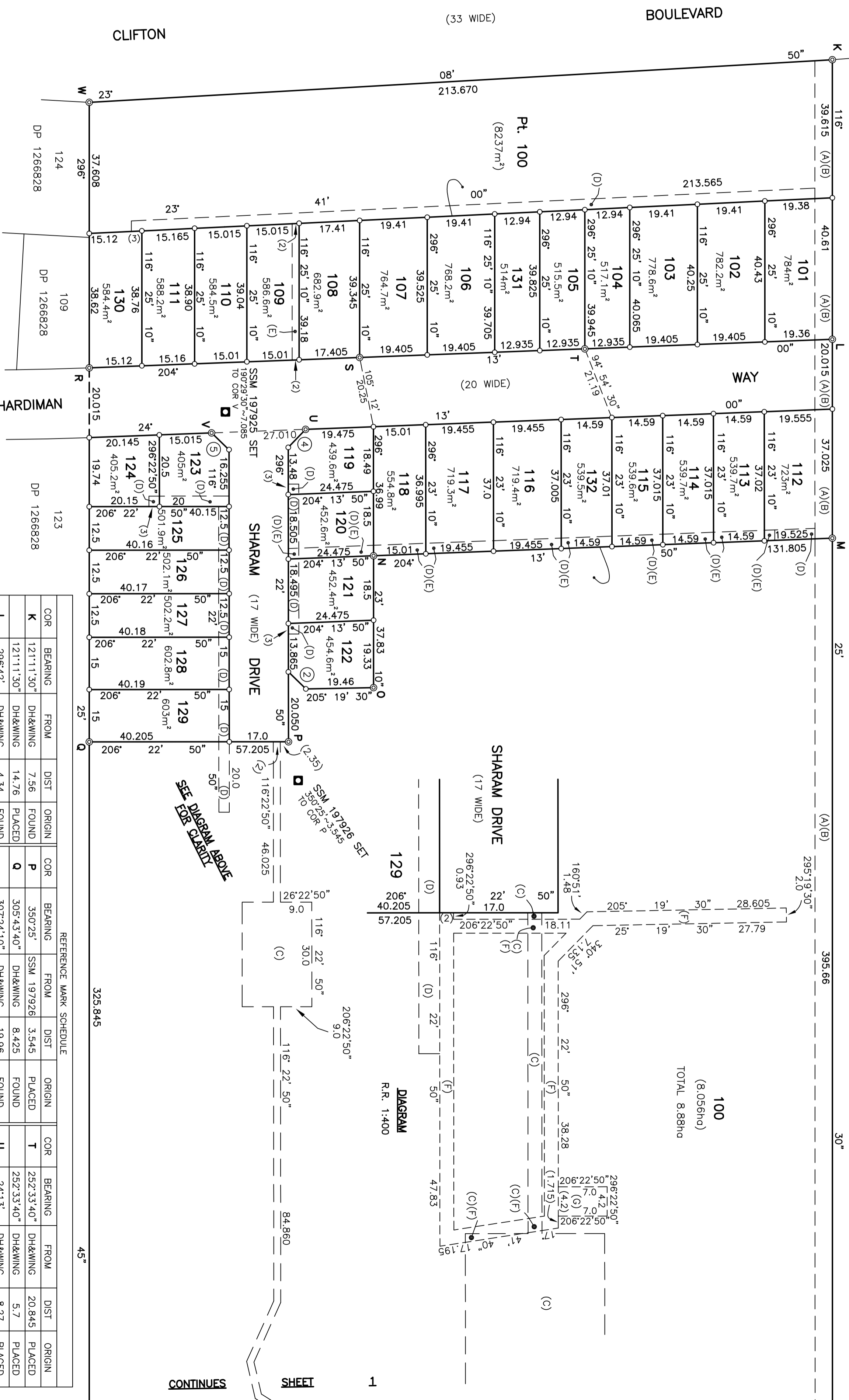
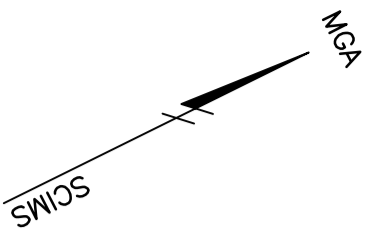
PLAN OF SUBDIVISION OF LOT 592
 DP 751743

LGA : GRIFFITH
 Locality : GRIFFITH
 Subdivision No : 1523/2021
 Lengths are in metres. Reduction Ratio 1:1250

Registered

DP

00 10 20 30 40 50 60 70 80 90 100 110 120 130 140



LINE	BEARING	DISTANCE
2	250°51'10"	7.005
4	340°18'00"	7.205
5	70°18'00"	6.935

- (A) EASEMENT TO DRAIN SEWAGE 5 WIDE (DP 1001586)
- (B) EASEMENT FOR ELECTRICITY PURPOSES 5 WIDE (DP 1083637)
- (C) EASEMENT TO DRAIN WATER 2 AND 20 WIDE
- (D) EASEMENT TO DRAIN SEWAGE 3 WIDE
- (E) EASEMENT TO DRAIN WATER 2 & 3 WIDE
- (F) EASEMENT FOR UNDERGROUND POWERLINES 2 WIDE
- (G) EASEMENT FOR MULTI-PURPOSE ELECTRICAL INSTALLATION 4.2 WIDE

NOTE: REFERENCE MARKS FD. AT K & L ORIGINATE FROM PROPOSED SUBDIVISION OF 591/751743. REFERENCE MARKS FD. AT Q ORIGINATE FROM PROPOSED SUBDIVISION OF 123/1266828.

COR	BEARING	FROM	DIST	ORIGIN	COR	BEARING	FROM	DIST	ORIGIN	COR	BEARING	FROM	DIST	ORIGIN
K	121°11'30"	DH&WING	7.56	FOUND	P	350°25'	S.S.M. 197926	3.545	PLACED	T	252°33'40"	DH&WING	20.845	PLACED
L	296°42'	DH&WING	4.34	FOUND	Q	305°43'40"	DH&WING	8.425	FOUND	U	252°33'40"	DH&WING	5.7	PLACED
M	72°20'	DH&WING	15.505	FOUND	R	307°24'10"	DH&WING	19.96	FOUND	V	24°13'	DH&WING	8.27	PLACED
N	158°32'	DH&WING	0.8	PLACED	S	307°02'	DH&WING	4.5	DP 1266828	W	24°13'	DH&WING	19.09	PLACED
O	296°23'10"	DH&WING	3.95	PLACED		296°25'10"	DH&WING	15.55	PLACED	X	190°29'30"	S.S.M. 197925	7.085	PLACED
	296°23'10"	DH&WING	13.15	PLACED		296°25'10"	DH&WING	4.42	PLACED	Y	296°26'	GI PIPE	1.005	PLACED
										Z	97°39'	PM 75752	0.985	FOUND

Surveyor : JOHN DAMIEN HARRISON
Date of Survey : 10/02/2021
Surveyor's Ref : PN 13138

PLAN OF SUBDIVISION OF LOT 592
DP 751743

LGA : GRIFFITH
Locality : GRIFFITH
Subdivision No : 1523/2021
Lengths are in metres. Reduction Ratio 1:800

Registered

DP

00 10 20 30 40 50 60 70 80 90 100 110 120 130 140

Table of mm